

# AMG-2070

Series

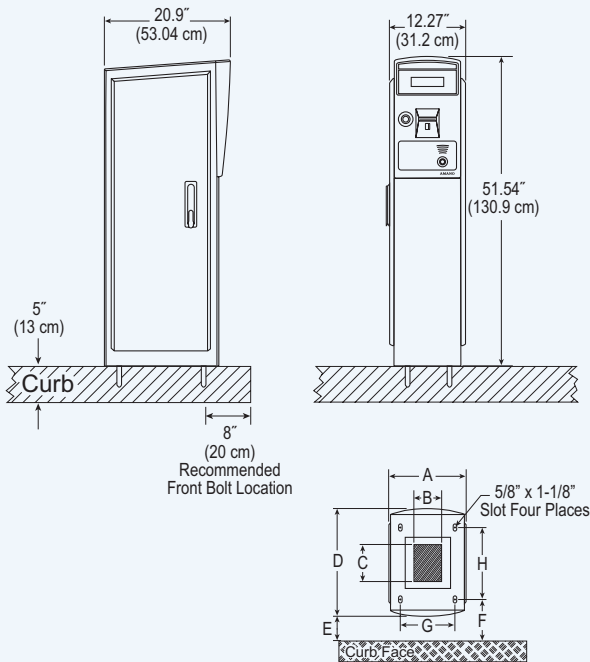
## *Entry Station*



*The AMG-2070 Series Entry Station is designed for multiple uses, typically at the unattended entrances of a parking facility. The AMG-2070 dispenses a magnetic stripe parking ticket encoded and printed with the date, time, ticket number, machine number and rate code. Integration with the optional proximity reader adds the ability to accept contract and monthly parker pass cards for entry.*



Series  
**AMG-2070**



CONFINE RIGID CONDUIT NO MORE THAN 2" (5 cm) HIGH IN THIS AREA.

A = 12.27" (31.2 cm)    C = 8" (20.32 cm)    \*E = 5" (13 cm)    G = 7.48" (19 cm)  
 B = 4" (10.16 cm)    D = 20.9" (53.04 cm)    \*F = 8" (20 cm)    H = 11.75" (29.8 cm)  
 \*Recommendation only. Installation requirements may vary.

**FEATURES**

- ◀ **Uses common hardware components (RWPV-based) for fewer inventoried parts and reduced service training**
- ◀ **Field programmable operation utilizing handheld wireless remote control**
- ◀ **Accommodates credit card size mag-stripe media**
- ◀ **Magstripe access card / credit card acceptance**
- ◀ **Proximity Technology Reader Integration optional**
- ◀ **Integrated intercom**
- ◀ **Personalized panel option**
- ◀ **Std. panel – no text**
- ◀ **Dual powder coat finish**

REPRESENTED BY:

**SPECIFICATIONS**

**COMPLIANCE**

**PCI PA-DSS (Payment Application Data Security Standard) Compliant**

Meets ADA (Americans with Disabilities Act) and ANSI (American National Standards Institute) requirements

**ELECTRICAL**

120V AC, 60 Hz  
 220/240V AC, 50/60 Hz  
 10 amp max. (120V) 5 amp max. (240V)  
 Multiple I/O capability for ticket tracking, counts and monitoring

**MECHANICAL**

Automatic dual ticket feed; dot matrix printer; cartridge ribbon; exclusive RWPV™ (read, write, print and vault) magstripe mechanism

**TIME CONTROL**

Real-time clock synchronization with host computer  
 Built-in crystal controlled perpetual calendar  
 Programmable Daylight Saving Time adjustment

**ENVIRONMENT**

**Temperature:** -20°F ~ 120°F (-29°C ~ 49°C)  
 Automatic thermostat-controlled heater included

**Humidity:** 10% ~ 90% (non-condensing)

**HOUSING**

Heavy-duty, 14 gauge steel construction, weather gasketing, lockable door.  
**Dimensions:** 51.54"H x 12.27"W x 20.9"D (130.9 cm x 31.2 cm x 53.04 cm)  
**Ticket throat:** 41" (104 cm)  
**Weight:** 135 lbs. (61 kg)  
**Finish (Standard):** Argento Silver (#305) cabinet / Classic Grey (#314) side panels; White (RAL#9003); custom color available

**PRINTER**

Large (7 x 9 dot pattern) dot matrix printer  
 Prints date and time (12 & 24-hour format), ticket number, machine number and rate  
 Marks and voids retracted tickets  
 Self sharpening cutter blade

**TICKETS**

Uses fanfold tickets: 5,000 tickets/carton. Holds two cartons.  
 Credit card size receipt tickets: 2-1/8" x 3-3/8" (5.41 cm x 8.59 cm)

**OPTIONS**

2nd I/O Rack (passcard readers lockout)  
 Magstripe and proximity access card models optional

**INTERCOM**

Aiphone™ LEF series intercom system  
 Standard user recordable voice announcement

*Specifications are approximate and are subject to change without notice.  
 UL approval does not apply to 220/240V AC, 50/60 Hz*



**AMANO McGANN**

2699 Patton Road, Roseville, MN 55113  
 Tel: (612) 331-2020 www.amanomcgann.com